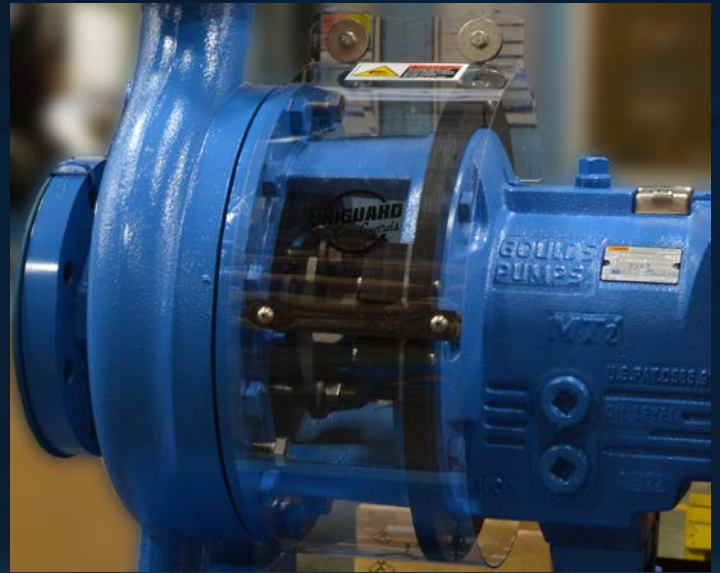




UNIGUARD™ UniClear

Uniguard UniClear Guards were specifically developed to ensure employee safety as well as meet compliance of government regulations that stipulate all rotating machinery must be guarded. They are designed to be easily installed, allow for visual inspections and yet they are economical. Uniguard UniClear Guards are corrosion resistant made from polycarbonate (shield), high density polyethylene (frame) and stainless steel fasteners. They are available where Uniguard Machine Guards are sold.



AVAILABLE SIZES

SG-ST-X-i-8	UniClear Guard - Stuffing Box	Fits STX/STi	8 inch Frame
SG-MT-LT-X-i-8	UniClear Guard - Stuffing Box	Fits MTX/LTX MTi/LTi	8 inch Frame
SG-MT-LT-X-i-10	UniClear Guard - Stuffing Box	Fits MTX/LTX MTi/LTi	10 inch Frame
SG-MT-LT-X-i-13	UniClear Guard - Stuffing Box	Fits MTX/LTX MTi/LTi	13 inch Frame
SG-XLT-X-i-13	UniClear Guard - Stuffing Box	Fits XLTX/XLTi	13 inch Frame
SG-XLT-X-i-15	UniClear Guard - Stuffing Box	Fits XLTX/XLTi	15 inch Frame

The UniGuard UniClear Shaft Machine Guard is designed to cover the stuffing box area to prevent intrusion of hands and fingers contacting the rotating shaft. It is not designed to protect against splashing of the liquid being pumped from a leaking seal or packing. Your pumpage may attack the clear material. All mechanical seal leaks should be attended to promptly to prevent injury. When clear guard material becomes discolored or cracked it should be replaced immediately.