

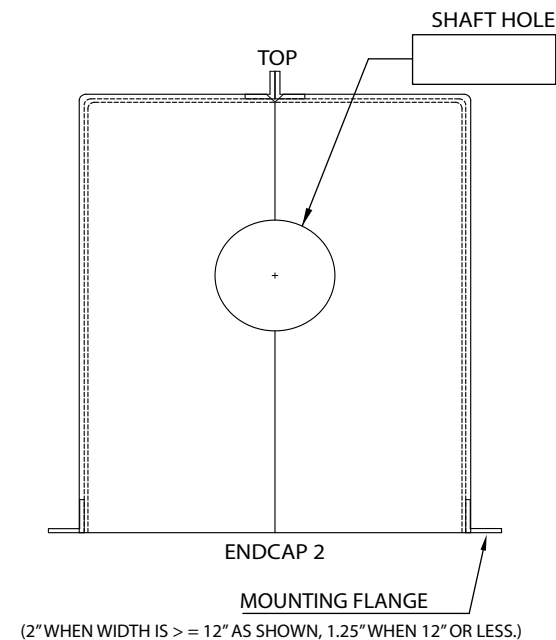
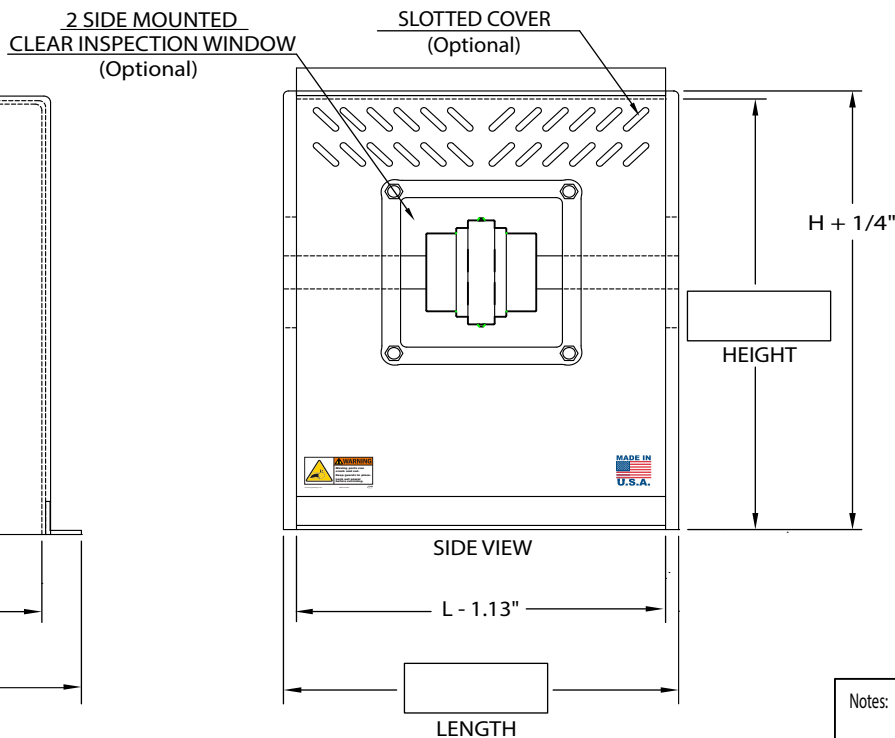
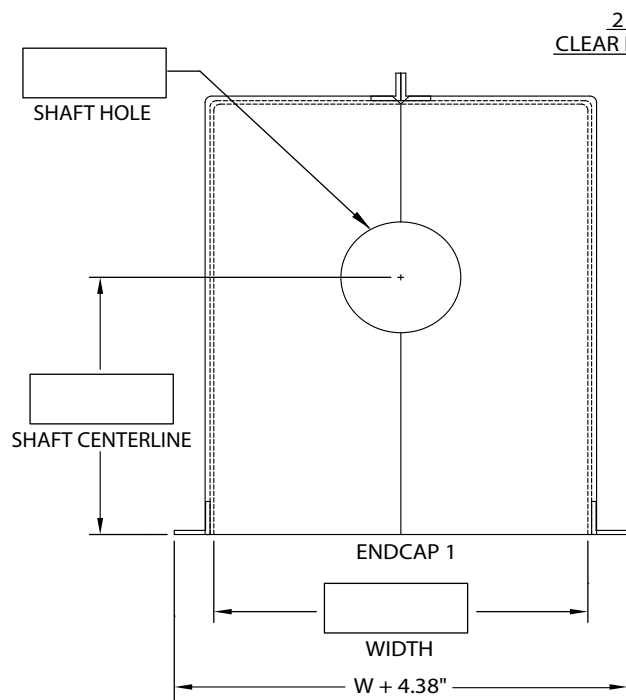
## UNIGUARD "CLGU" SIZING CHART

### 2-PC COUPLING GUARD

- ALL CUSTOM ORDERS REQUIRE DRAWING OR COMPLETED SIZING CHART
- ALL INSPECTION WINDOWS ARE OPTIONAL
- ALLOW MINIMUM 1/4" CLEARANCE AROUND SHAFT, SHAFT HOLES ARE ACTUAL SIZES
- ALLOW MINIMUM 1.50" CLEARANCE AROUND ALL ROTATING COMPONENTS
- IF SHAFT HOLES ARE TO BE LEFT BLANK ENTER "0"
- WIDTH AND HEIGHT DIMENSIONS ARE INSIDE CLEARANCE DIMENSIONS, LENGTH IS OUTSIDE
- YELLOW MATERIAL IS AVAILABLE UPON REQUEST

#### OPTIONS

- ☐ EQUIPMENT #
- ☐ SLOTTED COVER
- ☐ SOLID BOTTOM
- ☐ LIFT HANDLES
- ☐ 2-SIDE MOUNTED IW
- ☐ FIELD MODIFY



Notes:

Uniguard <sup>TM</sup> Machine Guards  
1115 Pleasant Ridge Road  
Greensboro, N.C. 27409  
(888) 549-4622  
sales@uniguardmgc.com



Uniguard Customer Name:

End User Company:

Eq. Mfg.:

Qty:

Uniguard Contact Name:

End User Contact Name:

Model:

Equip Numbers:

Phone #:

Date:

Notes:

Notes:

Equip Numbers:

E-Mail:

Notes:

Notes:

Equip Numbers: