

## UNIGUARD "JSG" SIZING CHART

### JACK SHAFT GUARD

- ALL CUSTOM ORDERS REQUIRE DRAWING OR COMPLETED SIZING CHART
- ALL INSPECTION WINDOWS ARE OPTIONAL
- ALLOW MINIMUM 1/4" CLEARANCE AROUND SHAFT, SHAFT HOLES ARE ACTUAL SIZES
- ALLOW MINIMUM 2.00" CLEARANCE AROUND ALL ROTATING COMPONENTS
- CUSTOM BRACKETS ARE TYPICALLY FABRICATED FOR MOUNTING DURING INSTALLATION
- IF SHAFT HOLES ARE TO BE LEFT BLANK ENTER "0"
- IF ADJUSTABLE ENTER MINIMUM/MAXIMUM LENGTHS
- DEFAULT FRONT PANELS ARE SOLID
- YELLOW MATERIAL IS AVAILABLE UPON REQUEST

**OPTIONS**

☐ EQUIPMENT #

☐ SLOTTED PANELS  
(NOTE LOCATION IN NOTES FIELD BELOW)

☐ INSPECTION WINDOW  
(NOTE LOCATION IN NOTES FIELD BELOW)

☐ LIFT HANDLES

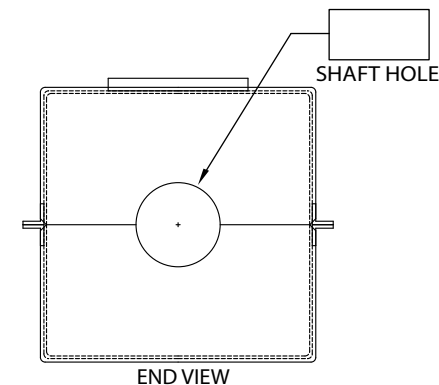
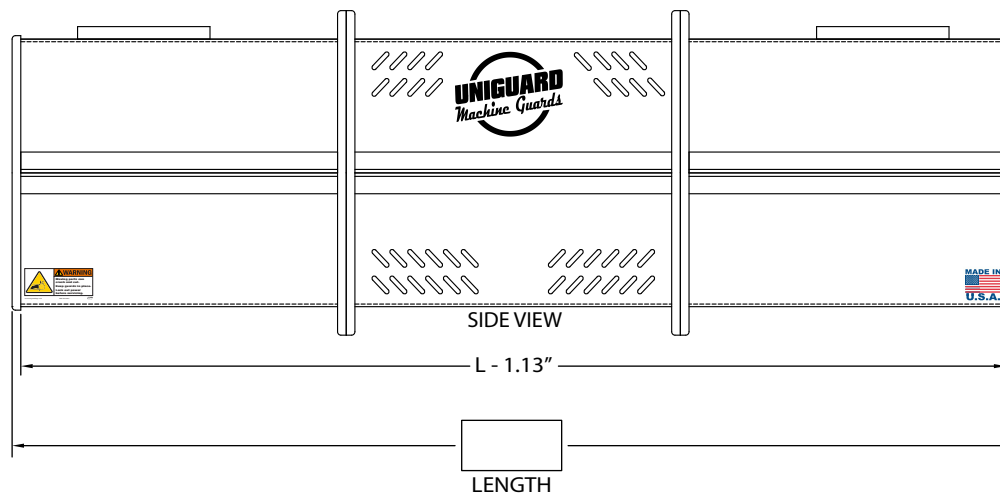
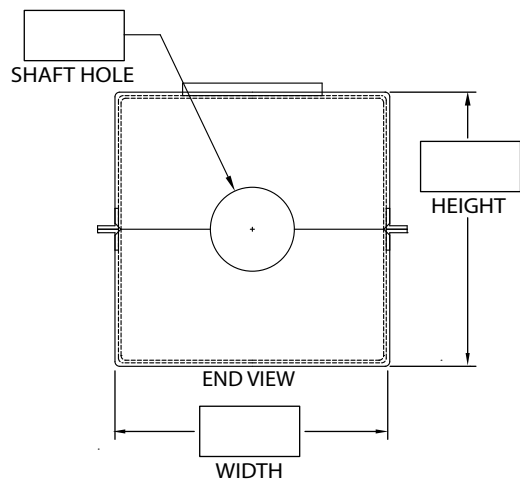
☐ ADJUSTABLE LENGTH

☐ 3X4" FLAT INSPECTION WINDOW

☐ 4X6" FLAT INSPECTION WINDOW

☐ 8X8" FLAT INSPECTION WINDOW

☐ FIELD MODIFY



Notes:

|                         |                        |           |                |
|-------------------------|------------------------|-----------|----------------|
| Uniguard Customer Name: | End User Company:      | Eq. Mfg.: | Qty:           |
| Uniguard Contact Name:  | End User Contact Name: | Model:    | Equip Numbers: |
| Phone #:                | Date:                  | Notes:    | Equip Numbers: |
| E-Mail:                 | Notes:                 | Notes:    | Equip Numbers: |

Uniguard <sup>TM</sup> Machine Guards  
 1115 Pleasant Ridge Road  
 Greensboro, N.C. 27409  
 (888) 549-4622  
 sales@uniguardmgc.com

