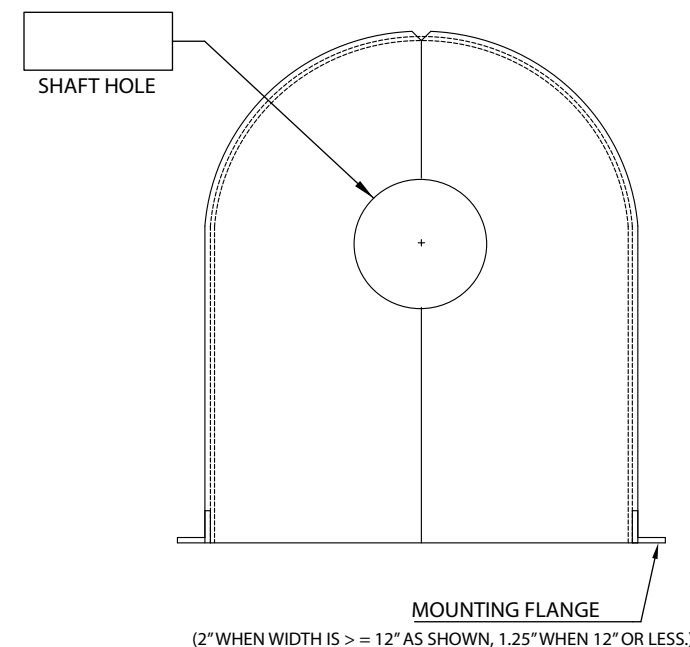
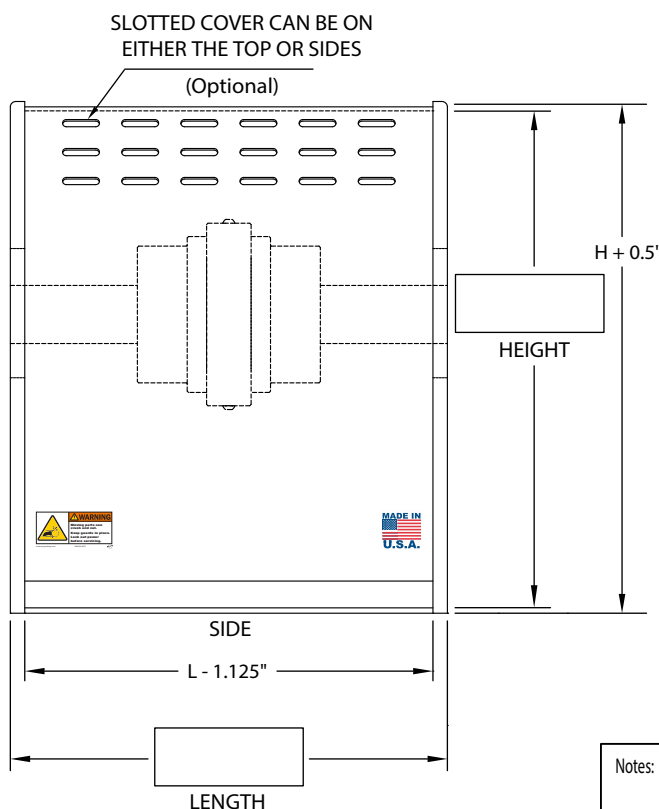
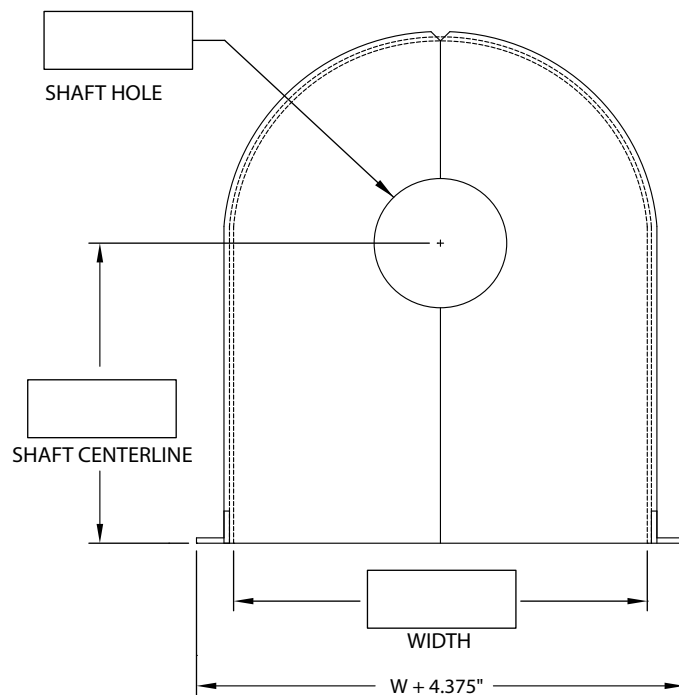
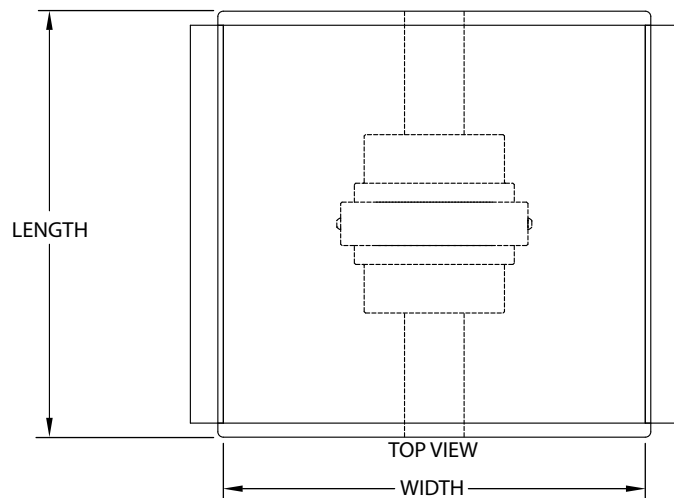


# UNIGUARD "CG-SPLIT" SIZING CHART 1-PC COUPLING GUARD

- ALL CUSTOM ORDERS REQUIRE DRAWING OR COMPLETED SIZING CHART
- ALLOW MINIMUM 1/4" CLEARANCE AROUND SHAFT, SHAFT HOLES ARE ACTUAL SIZES
- ALLOW MINIMUM 2" CLEARANCE AROUND ALL ROTATING COMPONENTS
- IF SHAFT HOLES ARE TO BE LEFT BLANK ENTER "0"
- WIDTH AND HEIGHT DIMENSIONS ARE INSIDE CLEARANCE DIMENSIONS, LENGTH IS OUTSIDE.
- YELLOW MATERIAL IS AVAILABLE UPON REQUEST
- HEIGHT IS EQUAL TO SHAFT CENTERLINE PLUS HALF OF GUARD WIDTH
- \*\*\*FLAT INSPECTION WINDOWS ARE NOT RECOMMENDED ON CG-SPLIT GUARDS\*\*\*
- \*\*\*PRIOR TO INSTALLATION VERIFY YOU HAVE ENOUGH SPACE TO EXTEND GUARD AROUND SHAFT ON LEFT AND RIGHT SIDES\*\*\*

## OPTIONS

- ☐ EQUIPMENT #
- ☐ SLOTTED TOP COVER
- ☐ SLOTTED SIDE COVER
- ☐ SOLID BOTTOM
- ☐ LIFT HANDLES
- ☐ FIELD MODIFY



**\*\* All required fields are marked in red \*\***

Notes:

Uniguard <sup>TM</sup> Machine Guards  
1115 Pleasant Ridge Road  
Greensboro, N.C. 27409  
(888) 549-4622  
sales@uniguardsmfg.com



Uniguard Customer Name:

Uniguard Contact Name:

Phone #:

Date:

E-Mail:

End User Company:

End User Contact Name:

Notes:

Notes:

Eq. Mfg.:

Model:

Notes:

Notes:

Qty:

Equip Numbers:

Equip Numbers:

Equip Numbers: