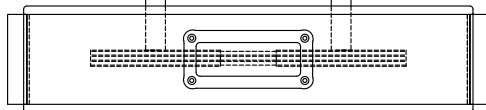


SHAFT OPTIONS

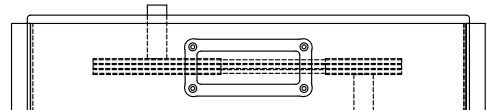
☐ Z1

STANDARD SHAFT CONFIGURATION



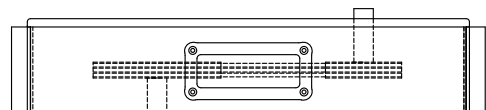
TOP (FRONT)

☐ Z2



TOP (FRONT)

☐ Z3



TOP (FRONT)

UNIGUARD "HBG" SIZING CHART HORIZONTAL BELT GUARD

- ALL CUSTOM ORDERS REQUIRE DRAWING OR COMPLETED SIZING CHART
- ALL INSPECTION WINDOWS ARE OPTIONAL
- ALLOW MINIMUM 1/4" CLEARANCE AROUND SHAFT, SHAFT HOLES ARE ACTUAL SIZES
- ALLOW MINIMUM 2.00" CLEARANCE AROUND ALL ROTATING COMPONENTS
- IF SHAFT HOLES ARE TO BE LEFT BLANK ENTER "0"
- SELECT HSA OPTIONS FOR HORIZONTAL SHAFT ADJUSTMENT (+/- 1.50" Typ.)
- YELLOW MATERIAL IS AVAILABLE UPON REQUEST
- IF SHAFT HOLES ARE SPECIFIED
 - THE REAR PANEL WILL BE A SLIP ON BACK FOR SHAFT SLOTS
 - THE REAR PANEL WILL INCLUDE SHAFT SLOTS AND FILLER PANELS
- IF SHAFT HOLES ARE NOT SPECIFIED
 - THE REAR PANEL WILL BE FIXED
 - THE REAR PANEL WILL BE SOLID WITHOUT SHAFT HOLES OR FILLER PANELS
 - THE SHAFT HOLES WILL HAVE TO BE CUT AND THE SHEAVES WILL HAVE TO BE REMOVED AND SHAFT HOLES CUT DURING INSTALLATION OF GUARD
 - FLANGED BACK CAN BE SLIP-ON OR FIXED
 - FLANGE BACK IS ATTACHED TO THE EQUIPMENT FOR SUPPORT

OPTIONS

☐ EQUIPMENT #

CHOOSE ONE:

☐ SHAFT HOLES

☐ NO SHAFT HOLES

☐ SHAFT SLOTS WITH FILLER PANELS

CHOOSE ONE:

☐ SLIP-ON-BACK

☐ FLANGED BACK

☐ FIXED BACK

☐ SLOTTED FRONT PANEL

☐ SLOTTED TOP WIDTH PANEL

☐ SLOTTED DEPTH WIDTH PANEL

☐ REMOVABLE FRONT PANEL

☐ LIFT HANDLES

☐ TOP WIDTH INSPECTION WINDOW

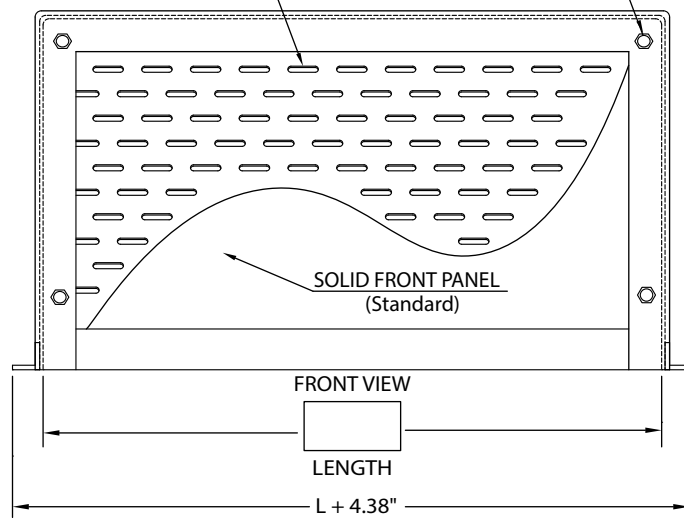
☐ FRONT INSPECTION WINDOW

☐ TAPERED DOWN TO LOWER SHAFT

☐ FIELD MODIFY

SLOTTED FRONT PANEL (Optional)

REMOVABLE FRONT PANEL (Optional)

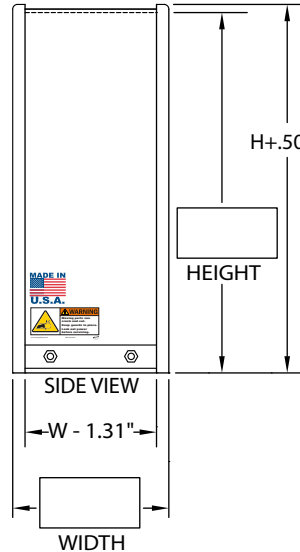


FRONT VIEW

LENGTH

$L + 4.38"$

(2" WHEN WIDTH IS $\geq 48"$ AS SHOWN, 1.25" WHEN 48" OR LESS.)



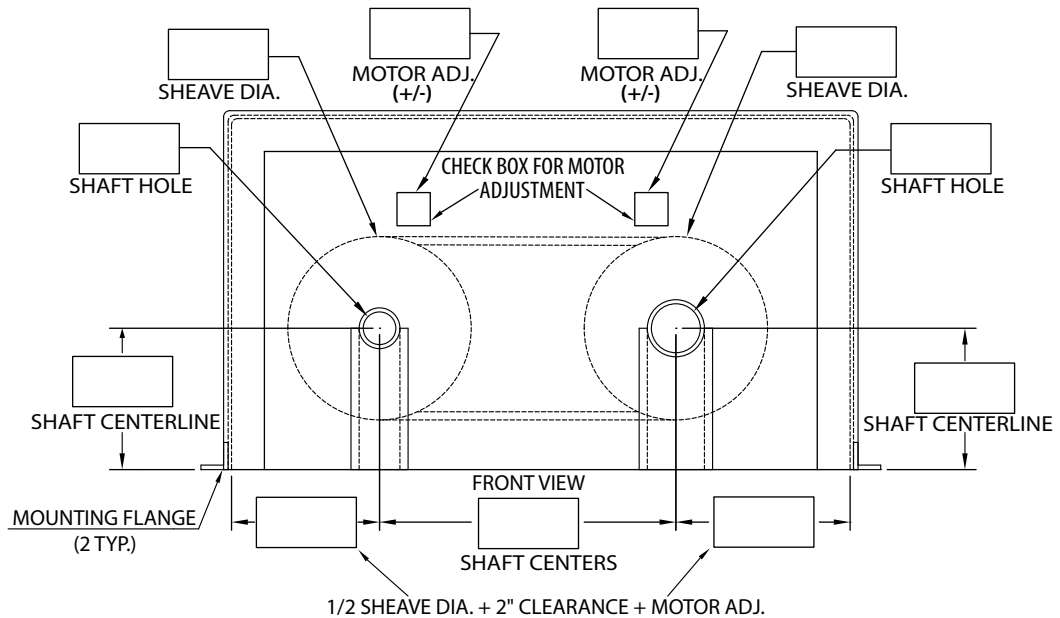
SIDE VIEW

$W - 1.31"$

WIDTH

$H + .50"$

HEIGHT



$1/2$ SHEAVE DIA. + 2" CLEARANCE + MOTOR ADJ.

Notes:

**** All required fields are marked in red ****

Uniguard™ Machine Guards
1115 Pleasant Ridge Road
Greensboro, N.C. 27409
(888) 549-4622
sales@uniguardmfg.com



Uniguard Customer Name:

Uniguard Contact Name:

Phone #:

Date:

EMail:

End User Company:

End User Contact Name:

Notes:

Notes:

Eq. Mfg.:

Model:

Notes:

Notes:

Qty:

Equip Numbers:

Equip Numbers:

Equip Numbers: