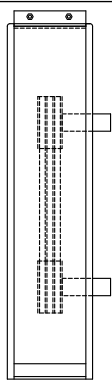


SHAFT OPTIONS

" C DRIVE"
(STANDARD)

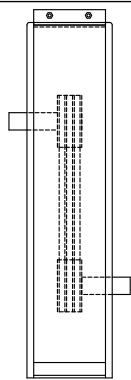
C1



SIDE VIEW

" Z DRIVE"

Z1



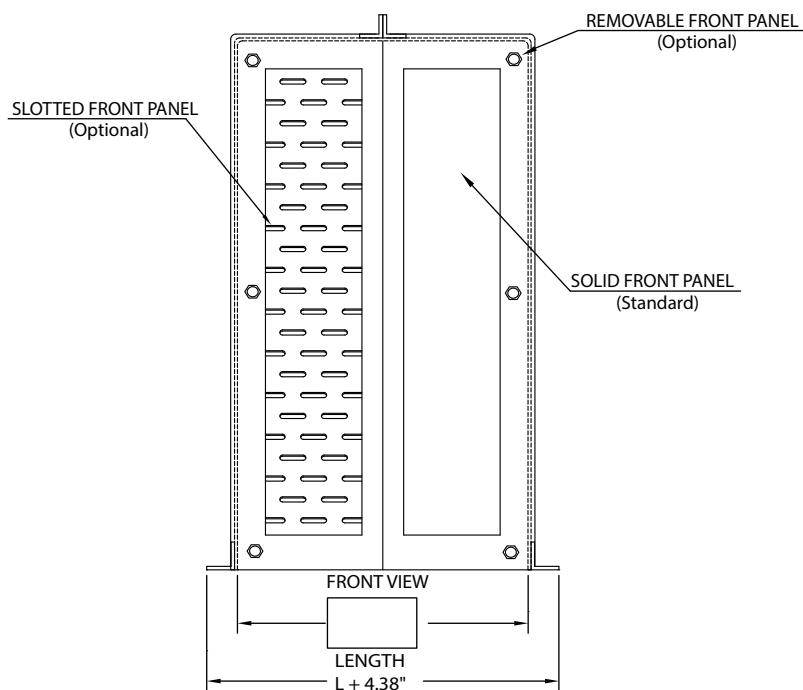
SIDE VIEW

UNIGUARD "VBG" SIZING CHART VERTICAL BELT GUARD

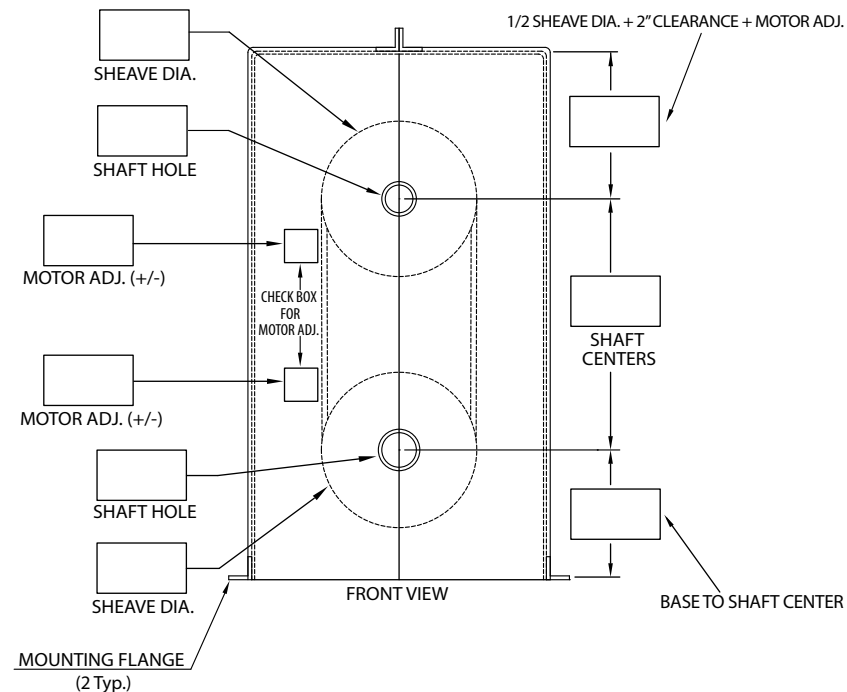
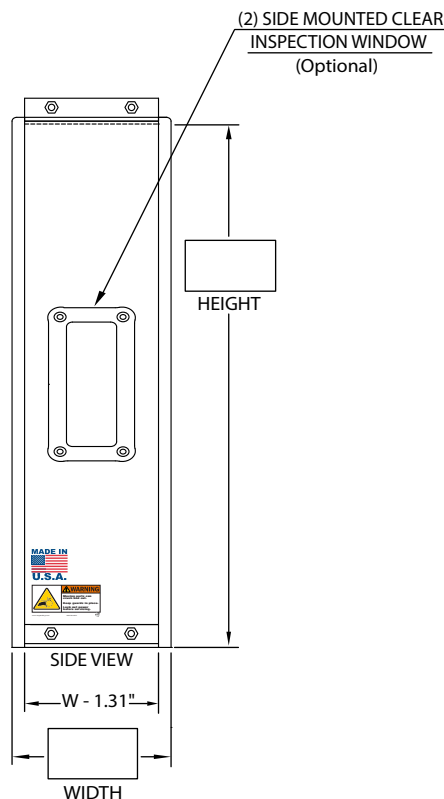
- ALL CUSTOM ORDERS REQUIRE DRAWING OR COMPLETED SIZING CHART
- ALL INSPECTION WINDOWS ARE OPTIONAL
- ALLOW MINIMUM 1/4" CLEARANCE AROUND SHAFT, SHAFT HOLES ARE ACTUAL SIZES
- ALLOW MINIMUM 2.00" CLEARANCE AROUND ALL ROTATING COMPONENTS
- IF SHAFT HOLES ARE TO BE LEFT BLANK ENTER "0"
- DEFAULT FRONT PANEL IS SOLID
- SELECT VSA OPTIONS FOR VERTICAL SHAFT ADJUSTMENT (+/- 1.50" Typ.)
- YELLOW MATERIAL IS AVAILABLE UPON REQUEST
- LENGTH = LARGEST SHEAVE + 2" CLEARANCE ON EACH SIDE
- HEIGHT = 1/2 TOP SHEAVE + TOP SHEAVE MOTOR ADJUSTMENT + SHAFT CENTERS + LOWER SHAFT FROM BASE

OPTIONS

- ☐ EQUIPMENT #
- ☐ SLOTTED FRONT PANEL
- ☐ SLOTTED TOP WIDTH PANEL
- ☐ SLOTTED DEPTH WIDTH PANEL
- ☐ REMOVABLE FRONT PANEL
- ☐ LIFT HANDLES
- ☐ TOP WIDTH INSPECTION WINDOW
- ☐ FRONT INSPECTION WINDOW
- ☐ FRONT MOUNTING BRACKET REQUIRED
- ☐ 2 SIDE INSPECTION WINDOW
- ☐ FIELD MODIFY



(2" WHEN WIDTH IS >= 48" AS SHOWN, 1.25" WHEN 48" OR LESS.)



**** All required fields are marked in red ****

Notes:

Uniguard™ Machine Guards
1115 Pleasant Ridge Road
Greensboro, N.C. 27409
(888) 549-4622
sales@uniguardsmfg.com



Uniguard Customer Name:

Uniguard Contact Name:

Phone #:

Date:

EMail:

End User Company:

End User Contact Name:

Notes:

Notes:

Eq. Mfg.:

Model:

Notes:

Notes:

Qty:

Equip Numbers:

Equip Numbers:

Equip Numbers: